

Before installing the Rolldown Screen

1. Remove the head cover. (Figure #1)
2. Remove the screen guide. When removing mark the left and right screen guide (right as right & left as left). The screen guides must be reinstalled in the same location, if the now the screen will not lock when pulled down. (Figure #2)
3. Remove the exterior side cover, care should be taken as not to damage the edges of the screw hole. (Figure #2)
4. Removal the screen handle cover from the screen cassette. Before removing be sure to mark the location of the screen sandle (right as right, left as left, top as top and bottom as bottom). This is to ensure that when reinstalled the screws they are installed in the same holes as they were originally. (Figure #3)

Installing the Rolldown Screen

1. Slide the screen guide onto the tabs on the bottom of the screen cassette. The right screen guide side must be installed on the right side of the screen cassette and the left screen guide must be installed on the left side of the screen cassette. (Figure #1)
2. Slide the screen cassette with the screen guides attached into the channel in the head of the window. (Figure #1)
3. Install the exterior side cover, care should be taken as not to damage the edges of the screw hole. (Figure #2)
4. Screw the screen guide into place. (Figure #2)
5. Screw the head cover in place. (Figure #1)
6. Screw the screen handle cover in place. Be sure to line up the screen handle in the same position as it was removed. (Figure #3)

NORWOOD

NEVER ORDINARY

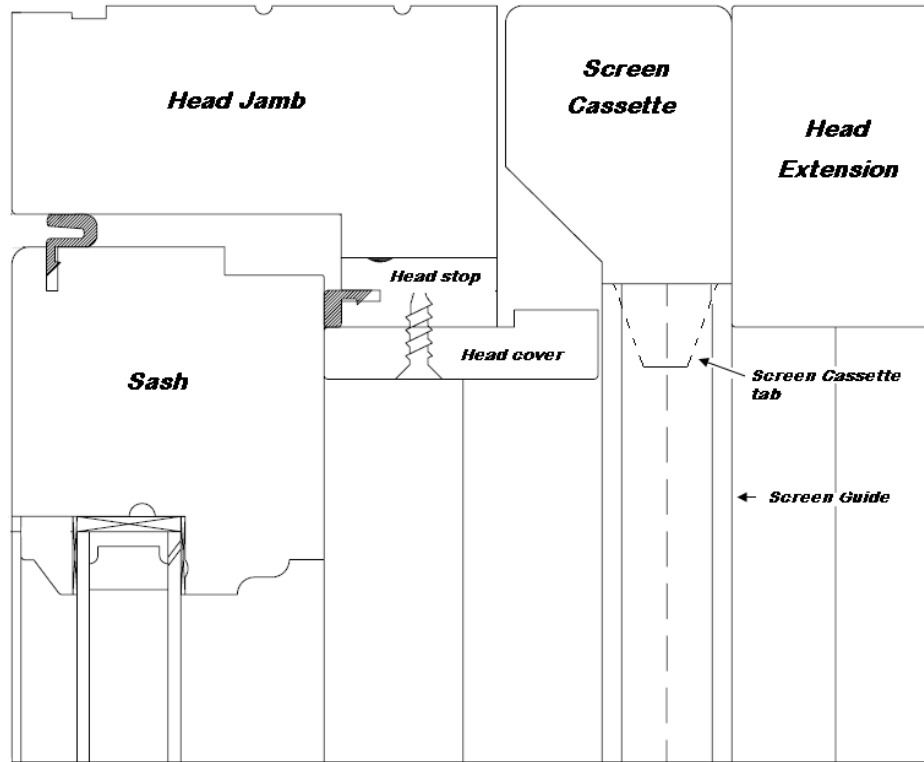


Figure 1 (side profile)

NORWOOD

NEVER ORDINARY

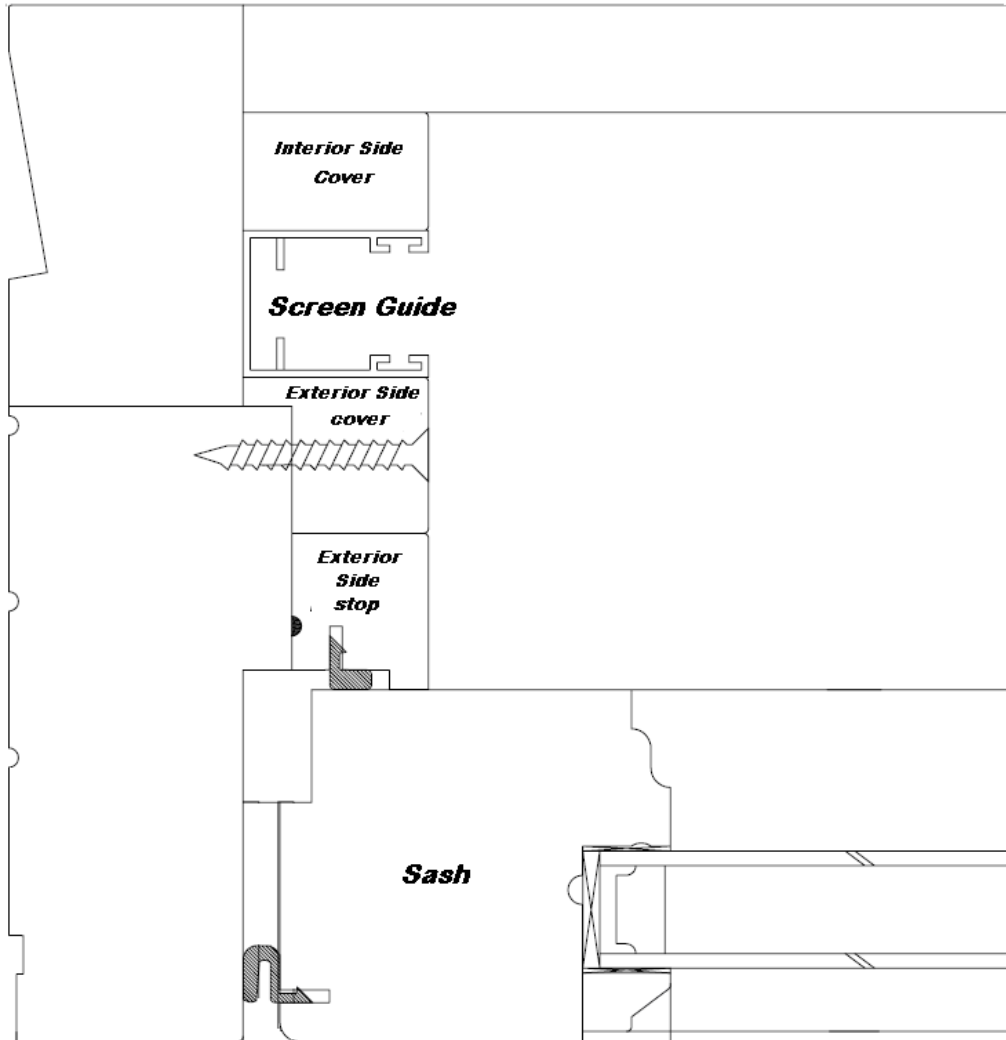


Figure 2 (Top Profile)

NORWOOD

NEVER ORDINARY

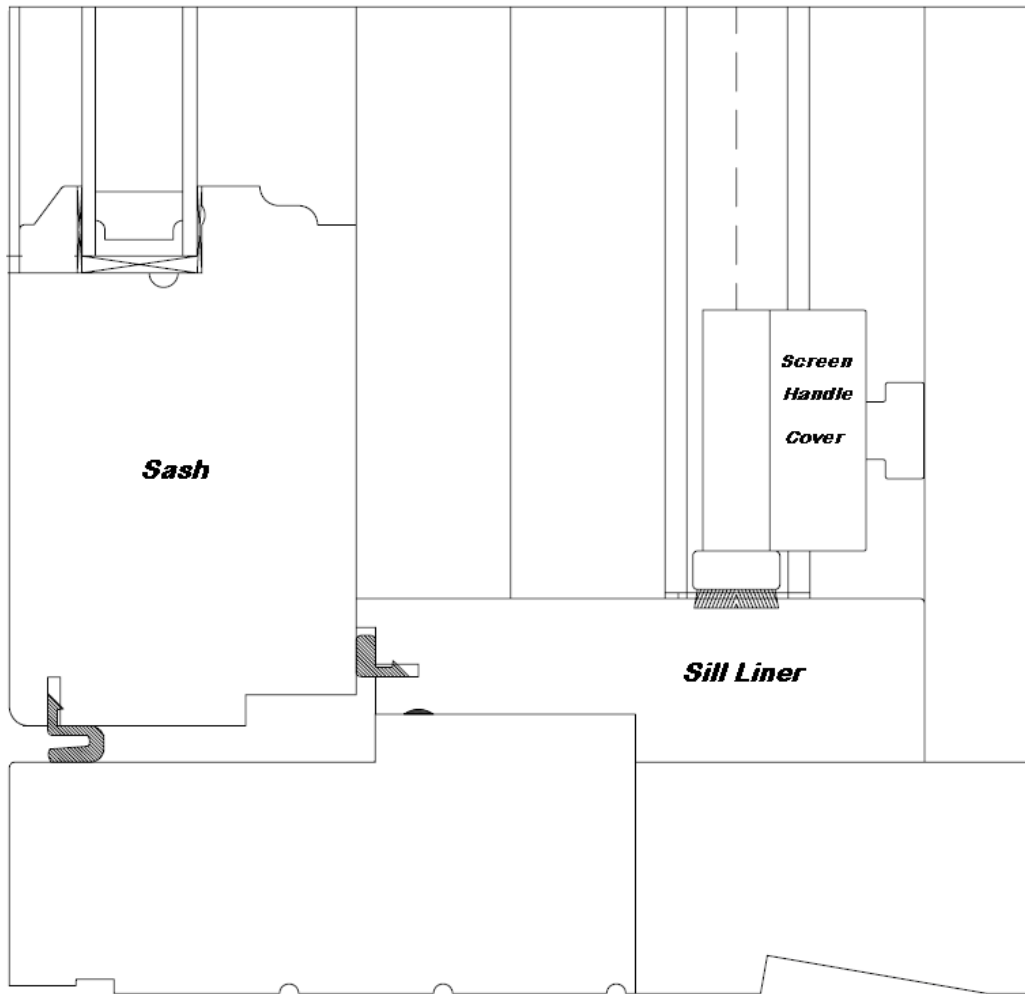


Figure 3 (Side Profile)